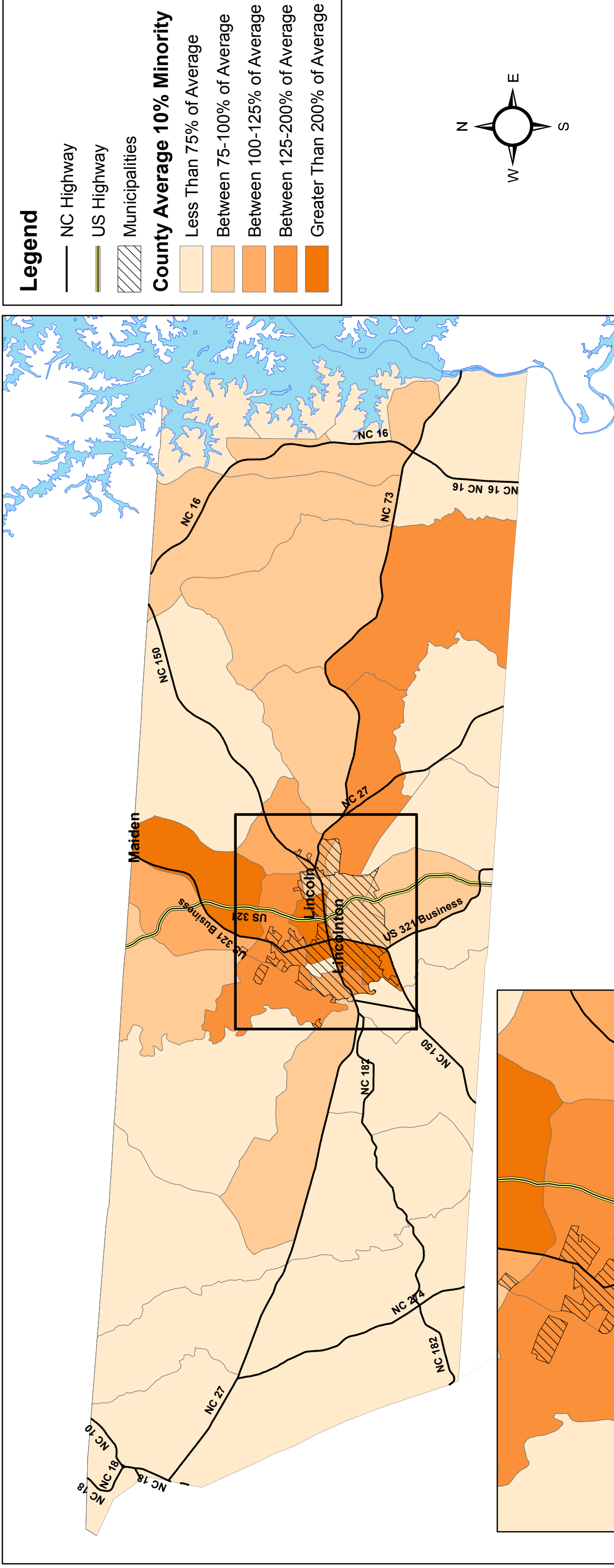


Lincoln County Minority Populations by Block Group

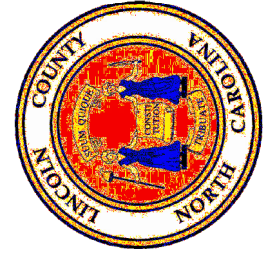
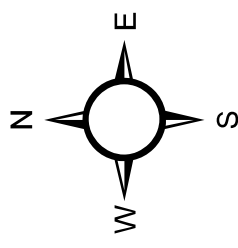


Legend

- NC Highway
- US Highway
- ▨ Municipalities

County Average 10% Minority

- Less Than 75% of Average
- Between 75-100% of Average
- Between 100-125% of Average
- Between 125-200% of Average
- Greater Than 200% of Average



Note: Data comes from the 2000 census Summary Tape File 1 database. Information is shown at the block group level.

A block group is a subdivision of land for census purposes, generally containing between 600 and 3,000 people, with an optimum size of 1,500 people.

"Percent Minority" was calculated by dividing the number of "White" respondents by total population from that block group, and subtracting it from 100.

Map Created in November 2006
by Centralina Council of Governments

